



Tackling health inequalities in Barnsley – Place Partnership Update

Cheryl Devine & Joe Minton – Barnsley HWB Board – 1 June 2023

**20
30**

Barnsley – the place
of possibilities.

**Healthy
Barnsley**

Landscape

Place

- B2030 – health and how it sits alongside / is synergistic with social, economic and environmental development
- HWBB – public health and inequalities are its bread and butter (it represents the health system as a whole)
- Place Partnership – the health and social care sector (focus on the provision of care and support for health)
- Barnsley Health Equity Group

South Yorkshire

- South Yorkshire Mayoral Combined Authority – social and economic development
- South Yorkshire Integrated Care Partnership – the closest equivalent HWBB
- NHS South Yorkshire Integrated Care Board – The closest to HSC sector
- South Yorkshire Population Health and Inequalities System Deliver Group

South Yorkshire inequalities event 3 Feb 2023

- Call to action from the mayor ... a very personal story
- Opportunities despite political restraint by CMO
- A chance to share best practice
 - Barnsley identifying vulnerability / inequality to inform support
 - Sheffield setting out the importance of the commercial determinants
 - Doncaster exploring inclusion health and what it means for health
 - Rotherham describing what can be done to address social isolation
- South Yorkshire
 - The health inequalities academy
 - Tackling inequalities in early childhood: Harvard Bloomberg City Leadership initiative



Barnsley – the place
of possibilities.

Healthy
Barnsley

Developing an aligned approach across the Place Partnership



Barnsley – the place
of possibilities.

Tackling Health Inequalities in Barnsley



Barnsley – the place of possibilities.

Our framework to improve and reduce health inequalities

Barnsley's Place Based Partnership has aligned its approach to improving public health and reducing health inequalities under a three-tier framework. In 2022-23 we already delivered a lot of work against this framework some of which we have outlined below.

Our framework

What this looks like

Tier 1 Increase

Increasing engagement, opportunities, services and support to address the key drivers of health inequalities for people in need and making every contact count.



How's Thi Ticker?

Between June and October 2022, partners have come together to deliver blood pressure check sessions in convenient locations across the borough. More than 1,550 blood pressure checks were completed.

Expansion of Social Prescribing

We are expanding social prescribing to support our local people. An example of this is the introduction of a Diabetes Health and Wellbeing Coach who will provide a holistic approach to those with, and at risk of diabetes to improve health outcomes.

Early help navigator in A&E

Early Help navigators now work in our Children's A&E and assessment unit. They support children and their families with social, emotional and economic wellbeing and train the hospital's children services staff to provide wider support to families.

Tier 2 Improve

Improving all health and care services in such a way that they are targeted to greatest need and reduce inequalities in care.



More accessible care in the community

Barnsley has opened the Community Diagnostics Centre (CDC) in the town centre, increasing accessibility of care, integrating services with people's daily lives and investing in the local economy.

SMI Health Checks

We have worked to improve the local registers of people with Severe Mental Issues and used these to provide Health Checks to prevent, identify and improve the management of long term conditions.

Measuring and reporting inequalities

We have developed standard equality metrics for health and social care providers and a common way of presenting service data on inequalities. This is being rolled out across partners.

Tier 3 Influence

Influence the wider determinants of health such as social, economic and environmental factors that affect inequalities in Barnsley.



Cost of living crisis

We have a borough-wide commitment with our partners to support people and businesses through this period of uncertainty and to continue to provide help to people who need it most.

Barnsley Hospital Anchor Charter

This sets out a more structured approach to understanding and strengthening the benefit we can collectively have on Barnsley's environment, economy and employment. From using local sources, improving opportunities for local people and switching to greener products.

SWYPT sustainability and social responsibility plan

This aims to use the levers it has to maximise the benefits to local people, communities, places, especially those facing challenges and disadvantages.

Looking forward to 2023/24

Goals of Barnsley Place Based Partnership



How will we achieve this?

As we continue to strengthen Barnsley Place Partnership's approach to reducing health inequalities, we need to maintain a number of underlying principles and values:

- ✓ **Recognising this is the right thing to do to deliver quality care and services, to sustainably manage need for HSC and for the benefit of Barnsley residents**
- ✓ **Taking everyone along with us, so the local population, the workforce and any key stakeholders participate and share an understanding of why we are making these changes**
- ✓ **Making these commitments and reshaping the way we do things whilst being sympathetic to the hour-by-hour and day-by-day pressures on health and social care services and the workforce**
- ✓ **Resourcing the right delivery mechanisms and services, generating capacity to guide the work to reduce inequalities and protecting the approach for sustainable change**
- ✓ **Challenging our decision making and ensuring we consider the impact on health inequalities in everything that we do**

What will be our focus

At organisation-level



- Commit to doing more across the three tier framework to reduce inequalities
- Improve data capture and sharing Core20PLUS characteristics
- Establish accountability, commitment and delivery mechanisms to reduce gaps identified and share learning

At partnership-level



- Create a tobacco free Barnsley
- Start active conversations with Core20PLUS population
- Establish a network of health and care organisations and wider partners

Core20PLUS*

CORE20 PLUS 5

- Provide all pre-school children and their families in Core20PLUS access to support in the community
- Deliver health and care to everyone in Core20PLUS working through community organisations and places of work
- Identify frailty in older people in Core20PLUS and provide care in home and community

*NHS England Core20Plus5 an Approach to Reducing Health Inequalities

Health Inequalities Plan

Our vision

We know our residents are disproportionately affected by poor health and inequalities; this is a justice issue. We will use data and intelligence to plan and deliver interventions via a targeted approach to those in need – without further exacerbating inequalities. We will listen, engage and support residents to have the best start to life and guide them through the life course, to be healthy and included members of Barnsley. We will be ambitious and keep residents at the heart of everything we do. We will strive to make inequalities everyone's business.

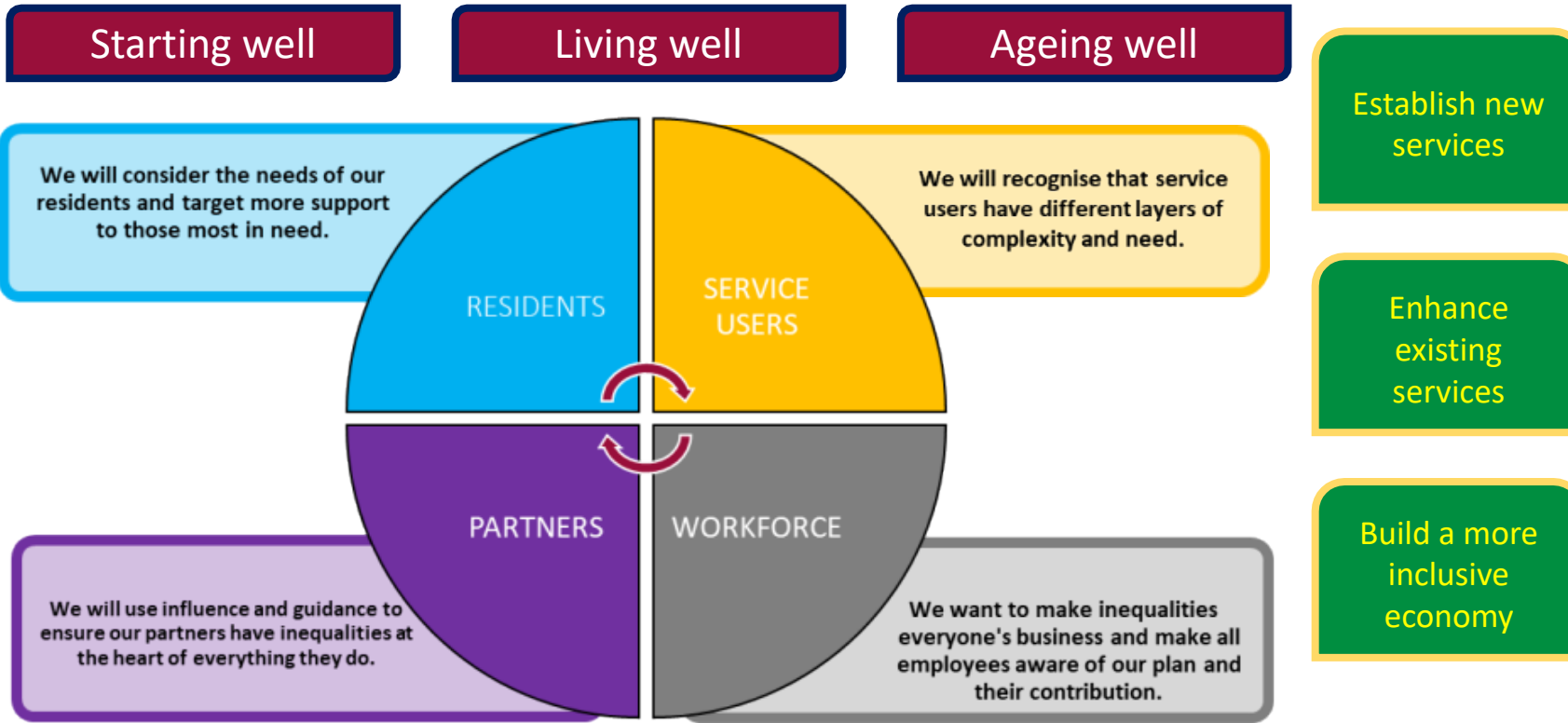
- Marmot Indicators
- Public Health Outcomes Framework
- Corporate Indicators
- Levelling Up

Healthy Barnsley

Learning Barnsley

Growing Barnsley

Sustainable Barnsley



Governance and Partnerships

Barnsley 2030 Board, HIAG, Health and Wellbeing Board, Inclusive Economy Board, Care Closer to Home. BHFT. ICB. Residents, Health Watch, Berneslai Homes, Third Sector, Barnsley College, Schools and early years settings, Council services. Primary Care Network, Employers Networks, CMHTs, OHID, NHSE.